

CBC America Presents



***IP & MEGAPIXEL
VIDEO SURVEILLANCE SOLUTIONS***



Sept 2010

CA: 877-407-9555

NY: 800-422-6707

www.computarganz.com



Main Topics

- *Introduction to IP Network/Video 101*
- *Benefits of IP Video over Analog*
- *H.264 Compression vs. Motion JPEG*
- *Benefits of Megapixel Technology*
- *Improvements in Megapixel Lens Resolution*
- *NVR and Software Solutions*
- *Computar & GANZ IP Product Offerings*



CA: 877-407-9555
NY: 800-422-6707
www.computarganz.com



Introduction to IP Network/Video 101

Purpose & objective

- Provide a foundation on IP and networking
- Identify and define network devices that are commonly used.
- Discuss basic network design concepts.



CA: 877-407-9555
NY: 800-422-6707
www.computarganz.com



Introduction to IP Network/Video 101

Analog vs. Digital

- *Analog*
 - Well known Knowledgebase
 - Mature technology
 - Stable
 - Lowest price
 - Maxed out on resolution of 600 lines
- *Digital (IP)*
 - Leading edge technology
 - Remote Management
 - Highest quality video
 - Video Analytics
 - Secure data transmission
 - Flexible
 - Limited by available bandwidth
 - 100m or 328ft max length of cables per segment
 - Max number of segment is unlimited with zero video loss



Introduction to IP Network/Video 101

Quick History of IP

- 1969 – Inception of ARPNET
- 1973 – TCP under development
- 1976 – DARPA adopts TCP
- 1978 – OSI Model is proposed
- 1978 – TCP and IP are separated
- 1983 – TCP/IP conversion date
- 1983 – ARPNET aka The Internet
- 1990 – Widespread Internet usage



CA: 877-407-9555
NY: 800-422-6707
www.computarganz.com



Introduction to IP Network/Video 101

Terms

Internet protocol (IP)

A key OSI layer network protocol used for addressing, delivering, and routing data over a network. IP communication is a layer 3 protocol.

- Flexible
- Dynamic
- The Standard in Networking

TCP/IP

Transmission Control Protocol/Internet Protocol – This is now the most common type of communication protocol for Internet and other similar networks. TCP is like a telephone call in that there is direct reliable communication.

UDP

User Datagram Protocol – This protocol is used for streaming audio and/or video, DNS servers, VSoIP and for printing. It is very efficient because it does not use error checking or the sorting of data packets. It is similar to sending an email in that you put the letter in the out box and you assume it gets to the destination, but very fast.

- A protocol is a standard, convention, or set of rules that governs the format, structure, or transmission of data.



CA: 877-407-9555

NY: 800-422-6707

www.computarganz.com



Introduction to IP Network/Video 101

UTP

- Unshielded Twisted Pair – This common category of wiring is primarily used for data and communications. This network cabling that consists of four twisted pairs of copper wire terminated by RJ45 connectors and limited to 100 meters or 328 feet. (Note Cat5e & Cat6 RJ45 connectors are different for wire size)
 - Cat5 – Short for Category 5, supports up to 100MHz & was mainly used for 10Mbps, but was also used for 100Mbps networks.
 - Cat5e - Short for Category 5 Enhanced, which supports up to 350 MHz. and used for 100Mbps, but supports up to 1000Mbps.
 - Cat6 – Best for up to 1000Mbps due to much better electromagnetic insulation.
- Ethernet - 10Mbps. It uses two pairs of four pairs of wires.
- Fast Ethernet - 100Mbps. It also uses two pairs of wires.
- Gigabit Ethernet - 1000Mbps. It uses all four pairs of wires.



Introduction to IP Network/Video 101

POE

- Power Over Ethernet – This 802.3af-2003 standard uses the normally unused two pairs of wires to supply DC power. Supply ranges from 12 to 48VDC and up to 15.4 watts. As a rule, do not exceed 10% less of the Max supply rating!

Static/Dynamic IP

- Static IP is an address set up by you which does not change, and dynamic IP is assigned by a DHCP server or router which will or may change every day, week, month, or year.

DHCP

- Automatic IP assignment to an IP device from a DHCP server such as router. Setting include IP address, subnet mask, gateway address, primary and secondary DNS addresses.



Introduction to IP Network/Video 101

DNS

- Domain Name Service – is system that returns the IP address when given a domain name, such as www.yahoo.com.

DDNS

- Dynamic Domain Name Service – is system that returns the IP address when given a domain name, such as joes.dvrdns.org, from a service that manages dynamic public IP addresses.

Port Forwarding

- Port forwarding is also known as Port Mapping, Applications, Servers, Virtual Servers and Pin Holes. It is a method to open a hole, through a firewall, directed to a specific device, to allow specific TCP and/or UDP communication.



Introduction to IP Network/Video 101

Network Settings

IP Address – this is the address of the device, which is similar to a street address.

Subnet Mask - this defines a block of addresses.

Default Gateway – this is the address of the device that connects the network to the Internet.

Primary DNS & Secondary DNS – this is the address of the servers that contains the Internet address book of IP addresses.

```
C:\>ipconfig
Microsoft Windows XP [Version 5.1.2600]
(C) Copyright 1985-2001 Microsoft Corp.

C:\Documents and Settings\Test>ipconfig /all
```

Windows IP Configuration

```
Host Name . . . . . : XP-Pro-TestLab
Primary Dns Suffix . . . . . :
Node Type . . . . . : Unknown
IP Routing Enabled. . . . . : No
WINS Proxy Enabled. . . . . : No
```

Ethernet adapter Local Area Connection:

```
Connection-specific DNS Suffix . :
Description . . . . . : Broadcom NetXtreme 57xx Gigabit Cont
roller
Physical Address. . . . . : 00-1A-A0-D0-D0-51
Dhcp Enabled. . . . . : No
IP Address. . . . . : 192.168.105.9
Subnet Mask . . . . . : 255.255.255.0
Default Gateway . . . . . : 192.168.105.2
DNS Servers . . . . . : 65.255.193.61
                        65.255.193.62
```



Introduction to IP Network/Video 101

IP Address – IPv4

- Class A 0.0.0.0 – 127.255.255.255
- Class B 128.0.0.0 – 191.255.255.255
- Class C 192.0.0.0 - 223.255.255.255
- Class D 224.0.0.0 - 239.255.255.255

Special IP Addresses

Private or Local (like office cubical addresses)

- Class A 10.0.0.0 -10.255.255.255
- Class B 172.16.0.0 – 172.31.255.255
- Class C 192.168.0.0 – 192.168.255.255

APIPA

- Class B 169.254.0.0 – 169.254.255.255

Self (only for testing, simulation, or)

- 127.0.0.0.0 - 127.255.255.255

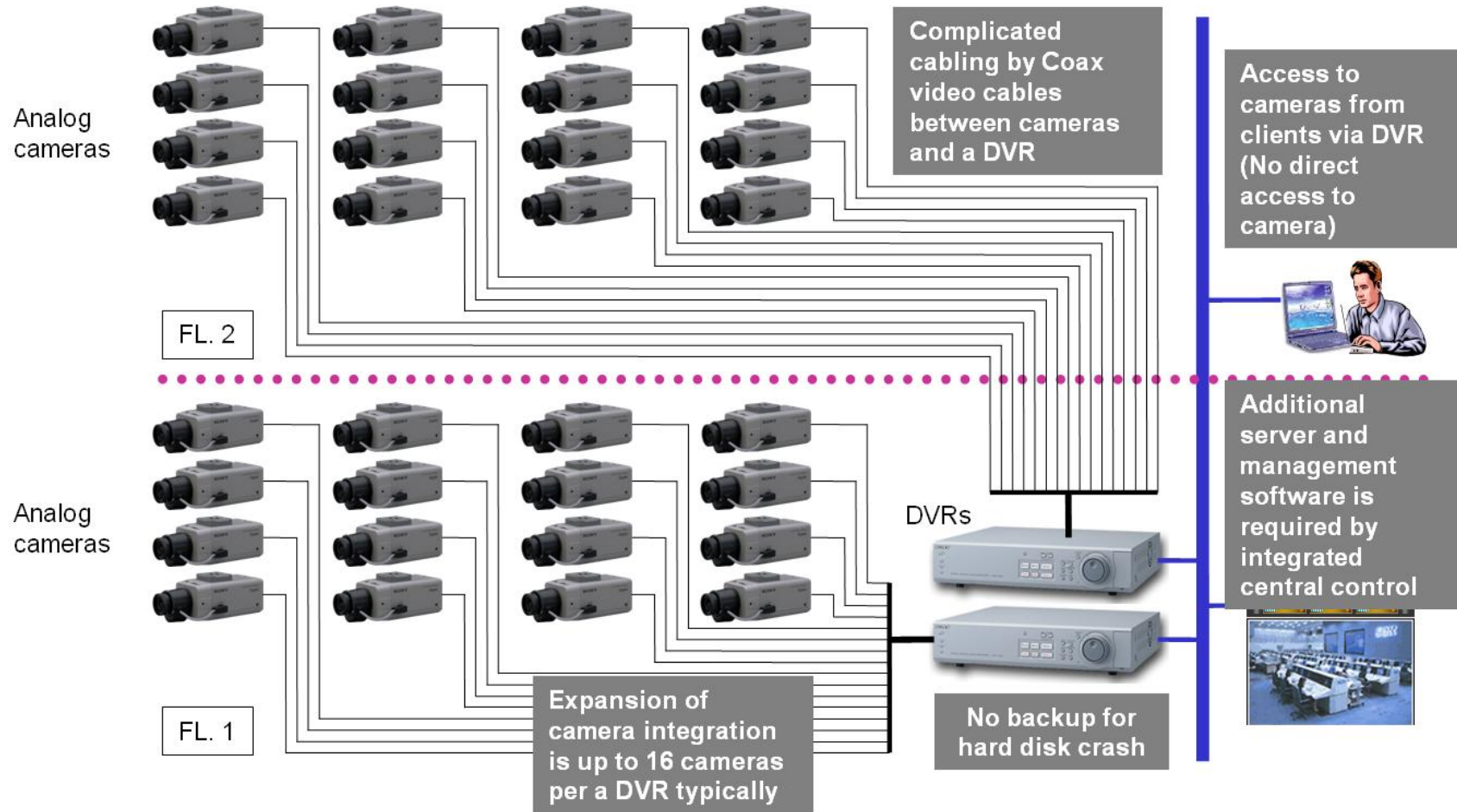
Other Unusable

- 0.0.0.0 – DHCP request
- 255.255.255.255 – Broadcast

The rest of the IP addresses are Public, except for the first and the last of a block of addresses.



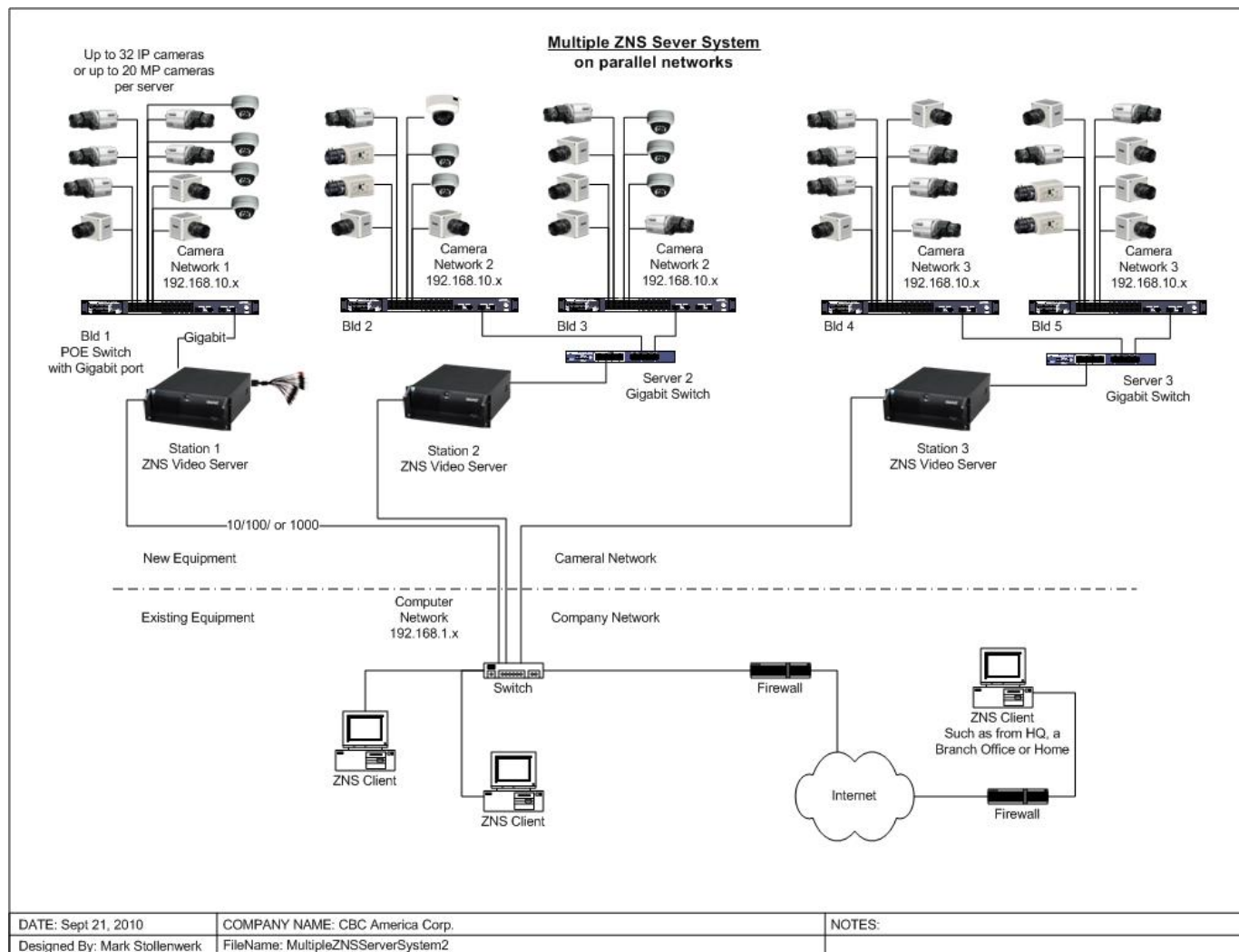
CCTV System Layout



CA: 877-407-9555
NY: 800-422-6707
www.computarganz.com

computar
GANZ

IP System Layout



CA: 877-407-9555
 NY: 800-422-6707
 www.computarganz.com



IP Advantages over DVRs

Scalability. IP-Surveillance scales from one to thousands of cameras in increments of a single camera. There are no 16-channel jumps like in the DVR world. IP-Surveillance offers any frame rate for any camera at any time.

More cost efficient infrastructure. Most facilities are additional wiring (a major expense of CCTV installs) is required. Only one type of network (IP) connects and manages the enterprise for data, video, voice and others - making management more effective and cost effective.

Remote accessibility. Any video stream, live or recorded, can be securely accessed and controlled from any location in the world over wired or wireless networks.

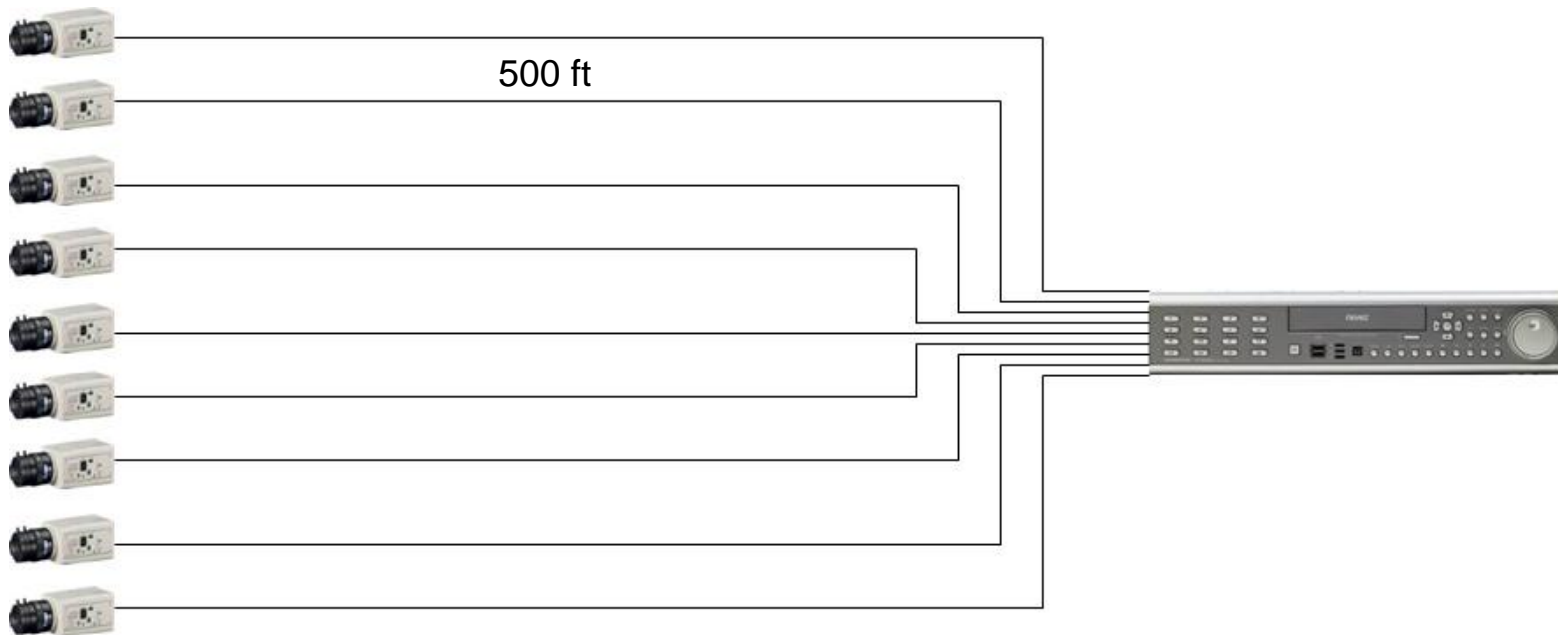


CA: 877-407-9555
NY: 800-422-6707
www.computarganz.com



Copper impacts CCTV pricing

- Copper prices have doubled over the past four years, forcing many cable manufacturers to increase coax.
- In an analog CCTV layout, with eight cameras requiring 500 ft cable runs, the total wire cost could be \$660.

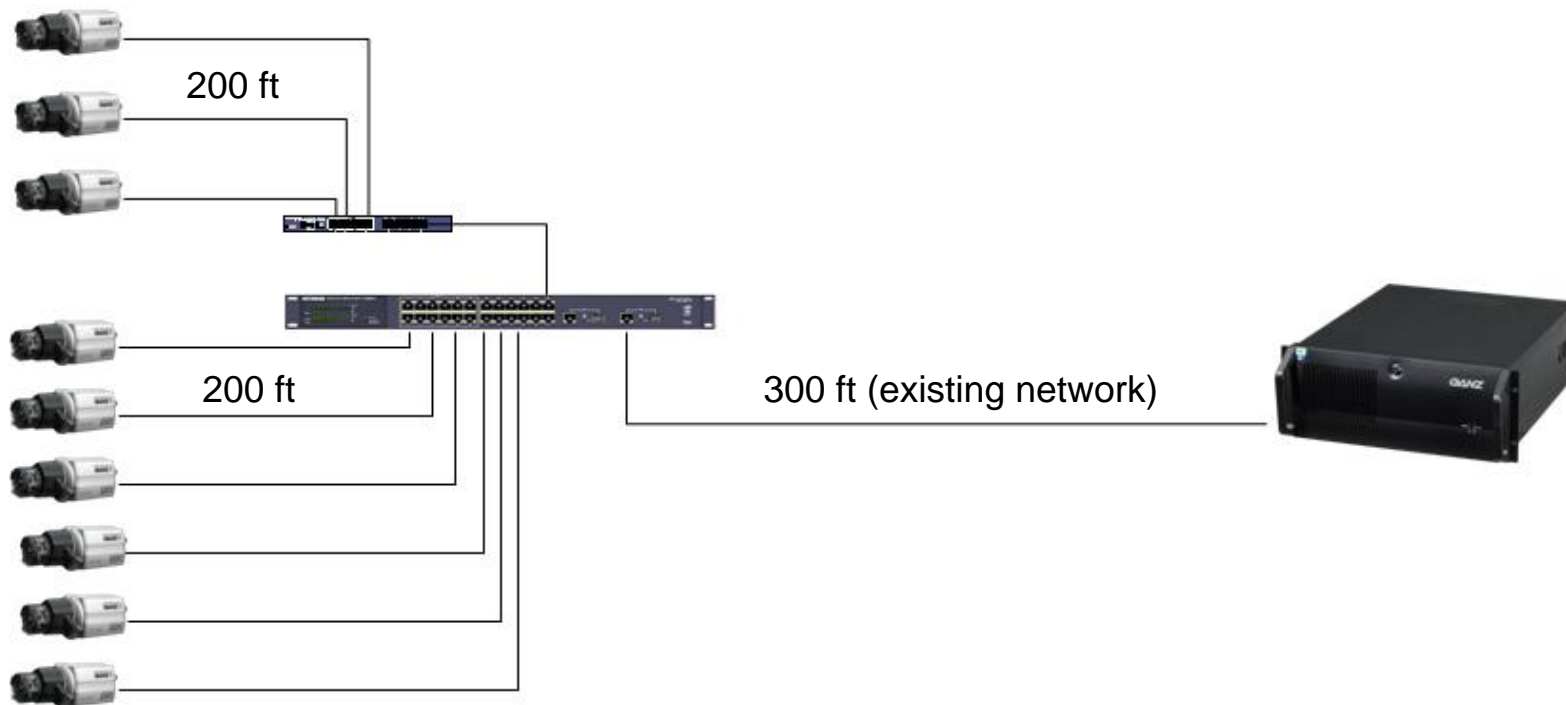


CA: 877-407-9555
NY: 800-422-6707
www.computarganz.com

computar
GANZ

Copper impacts CCTV pricing

- The effect of copper's rising cost will be far less on an IP system than analog CCTV.
- In a similar layout as the previous example, an IP system with 8 cameras 200 ft away from the nearest switch could easily be wired for \$160.



CA: 877-407-9555
NY: 800-422-6707
www.computarganz.com



Copper impacts CCTV pricing

Cost Comparison

Analog – 500 ft run from cameras to DVR or Network Video Recorder.

IP 200 ft new cable runs to existing network.

| | <u>Analog</u> | | <u>IP</u> | |
|--------------------|-------------------------|------------------------|--------------------------|-------------------------|
| <u># of Cables</u> | <u>Coax Length Req.</u> | <u>Total Coax Cost</u> | <u>Cat5e Length Req.</u> | <u>Total Cat5e Cost</u> |
| 8 | 4000 ft | \$600 | 1600 ft | \$160 |
| 16 | 8000 ft | \$1320 | 3200 ft | \$320 |
| 32 | 16000 ft | \$2640 | 6400 ft | \$560 |



CA: 877-407-9555
NY: 800-422-6707
www.computarganz.com



IP Devices

- Modems – Convert POTS or cable to Ethernet
- Routers/Firewall – Manages the passing of IP traffic
- Switches – Connects IP devices to each other and resends IP traffic.
- Smart/Managed POE Switches – Preferred for video
- Hubs – Obsolete
- POE Midspans – Powers IP devices (does not resend IP traffic, but only passes IP traffic thru)
- Media converters – Converts Ethernet to another form like i.e. to COAX or Fiber Optic to extend beyond the 100 meter limit.

Combination devices

- Modem-Router-Switch – DSL Modem/Router



CA: 877-407-9555
NY: 800-422-6707
www.computarganz.com



IP Documentation

Standardize your IP addressing schema

- Use a Class C network which is a subnet mask of 255.255.255.0 give you 254 devices, i.e. addresses from 192.169.10.1 to 192.168.10.254

Examples:

- 192.169.10.1 Gateway Router (or 192.169.10.254) usually not necessary
- 192.169.10.2 - 192.169.10.9 Smart Switches
- 192.169.10.10 - 192.169.10.19 NVR's
- 192.169.10.20 - 192.169.10.99 Cameras
- 192.169.10.100 - 192.169.10.140 DHCP assigned addresses devices

Device naming

- Name and label all Switches, NVR Servers, and Cables,
- For cameras, Numbers & Viewed location i.e. "01. Front Gate"
- Use a good label machine like a P-Touch

Write everything down on paper, date it, and keep it in a folder. The is even more important for changes, You can pretty it up later for the customer.



Essential Network Installation Tools

- Laptop Computer (with camera installer softwares)
- UTP Cable Tester
- Cable Toner
- Cable Cutter and Cable Stripper
- RJ45 Crimp Tool
- 110 Punchdown Tool
- Patch Cable
- Cross-Over Patch Cable



CA: 877-407-9555
NY: 800-422-6707
www.computarganz.com



Essential Network Testing Tools

- Ping – Uses an ICMP request on port 8 to find IP devices
- Ipconfig – gathers IP information on the PC
- Tracert – displays up to 15 routers from the source to the destination
- www.portforward.com – Used to get procedures for different devices.
- www.canyouseeme.org – Used to test completed port forward settings.
- www.yougetsignal.com/tools/open-ports/ - Used to test port forward settings on non-primary static IP addresses.
- Advanced IP Scanner 1.5 – helps find other device on the network.
- www.dyndns.com – a free DDNS service that allows you to choose your own sub-domain name and one of their domain names.



IP Marketing Opportunities

Education – security and remote monitoring of school playground areas, corridors, halls, and classrooms, as well as security of the buildings themselves.

Sporting Events – Monitoring Stadiums to soccer or baseball fields.

Transportation – remote monitoring of railway stations and tracks, roads, highways, and airports.

Banking – traditional security applications in high street banks, branch offices, and anywhere ATMs are located.

Government – within security surveillance applications, often integrated into existing and new access control systems.

Retail – for security and remote monitoring purposes to making stor management easier and more efficient.

Industry – monitoring manufacturing processes, logistics system, warehouse and stock control systems.

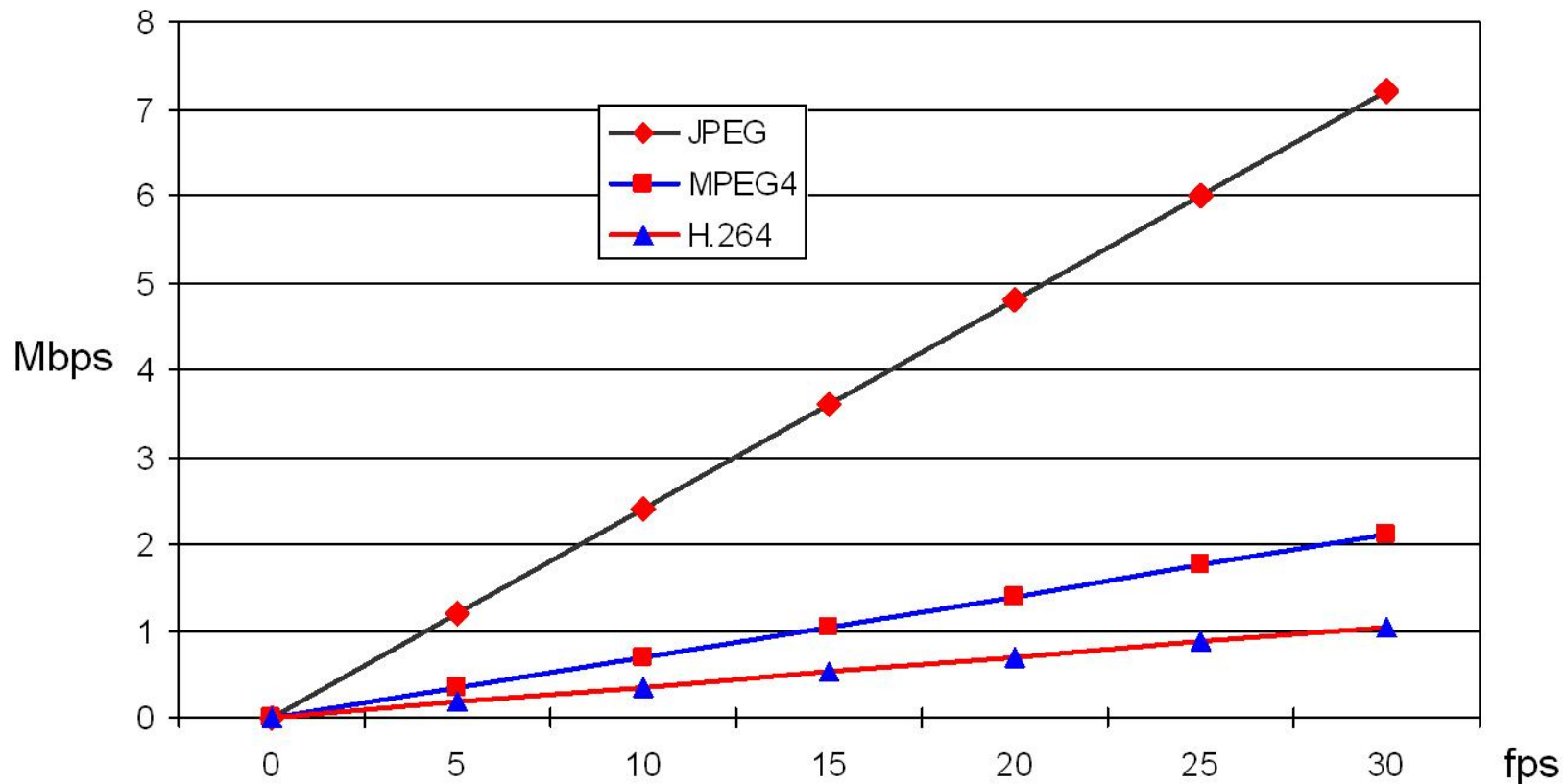


CA: 877-407-9555
NY: 800-422-6707
www.computarganz.com



Storage Capacity Planning

- The compression CODEC used (JPEG [MJPEG], MPEG4, or H.264) determines the storage capacity needed for each system.



CA: 877-407-9555
NY: 800-422-6707
www.computarganz.com

computar
GANZ

Storage Calculator



ZNS - ZNR
Estimated Storage Calculator

CBC (AMERICA) Corp.
Commack, NY: (800) 422-6707
Torrance, CA: (877) 407-9555
www.computarganz.com

Enter the number of cameras, the frames per second (fps), and the percentage of Motion viewed from the cameras in the light gray fields.
If 'N' for using MPEG4/H.264, storage will be calculated for MJPEG as are the other cameras. MPEG4/H.264 is calculated for medium motion.
If Continuous Recording is used, set % Motion to 100%, which means that recording is for 24 hour per day. Otherwise, % Motion can be estimated by dividing working hours by 24 hours times and estimated percent of the time there is motion. e.g. 15/24 x 80% = 50%

Number of Storage Days:

| Camera Model (Max Camera Pixel Dimensions) | Max fps per camera | Max KB per Frame | # of Cameras | FPS per Camera | Using Mpeg4 /H.264 (Y/N) | % Motion | Ave. Bandwidth (Mbps) | Video Storage (GB/day) | Video Storage for 7 Days (TB) |
|---|--------------------|------------------|--------------|----------------|--------------------------|----------|-----------------------|------------------------|-------------------------------|
| MP8 (6400x1200) 4 images/camera | 22 | 1172 | | | | 50% | 0.00 | 0.00 | 0.00 |
| MP5A (2592x1944) | 15 | 685 | | | | 50% | 0.00 | 0.00 | 0.00 |
| MP5DN (2592x1944) | 9 | 685 | | | Y | 50% | 0.00 | 0.00 | 0.00 |
| MP3A (2048x1536) | 20 | 463 | | | | 50% | 0.00 | 0.00 | 0.00 |
| MP3DN (2048x1536) | 15 | 463 | | | Y | 50% | 0.00 | 0.00 | 0.00 |
| MP3DN-2 (Variable) | 30 | 384 | | | | 50% | 0.00 | 0.00 | 0.00 |
| MP2A (1600x1200) | 24 | 293 | | | | 50% | 0.00 | 0.00 | 0.00 |
| MP2DN (1600x1200) | 24 | 293 | | | y | 50% | 0.00 | 0.00 | 0.00 |
| MP1A (1280x1024) | 30 | 227 | | | | 50% | 0.00 | 0.00 | 0.00 |
| MP1DN (1280x1024) | 30 | 227 | | | Y | 50% | 0.00 | 0.00 | 0.00 |
| True D1 (720x480) | 30 | 69 | | | | 50% | 0.00 | 0.00 | 0.00 |
| D1 (704x480) | 30 | 67.5 | | | | 50% | 0.00 | 0.00 | 0.00 |
| VGA (640x480) | 30 | 61.4 | 32 | 10 | Y | 50% | 13.82 | 809.47 | 6.15 |
| 2 CIF (640x240) | 30 | 30.7 | | | | 50% | 0.00 | 0.00 | 0.00 |
| 1 CIF (320x240) | 30 | 15.3 | | | | 50% | 0.00 | 0.00 | 0.00 |

| | | | |
|--------------------------------------|-------|--------|---------------------------|
| Total Mbps for storage: | 13.82 | | |
| Total GB/Day: | | 809.47 | |
| Total server storage for 7 Days (TB) | | 6.51 | Act. HDD Size => 8(TB) |



CA: 877-407-9555
NY: 800-422-6707
www.computarganz.com



Network Planning Considerations

- Customers Expectations (Security or entertainment)
 - Expected frames per second (24-30 fps for slight of hand, 10-15 fps for small item shoplifting, 3-7 fps for larger shoplifting, 1-3 fps for vandalism large item theft)
 - Video resolution/quality
- Number of cameras
 - Existing Cameras
 - D1/VGA Cameras
 - Megapixel Cameras
- How to limit network traffic
 - Record on motion
 - Reduced resolution
 - Areas to mask
- Existing Network
 - Cables or run new
 - Bandwidth
 - Internet Service existing/Available (DSL, T1, Cable, FIOS, ATT Uverse)
 - Local network available bandwidth for client connections
 - Nodes / Switches / closets / NEMA Boxes Locations
 - Distances to nodes
 - Are media converters required to extend the network? Coax, Cat5e, Fiber



The Problem - Limited Field of View

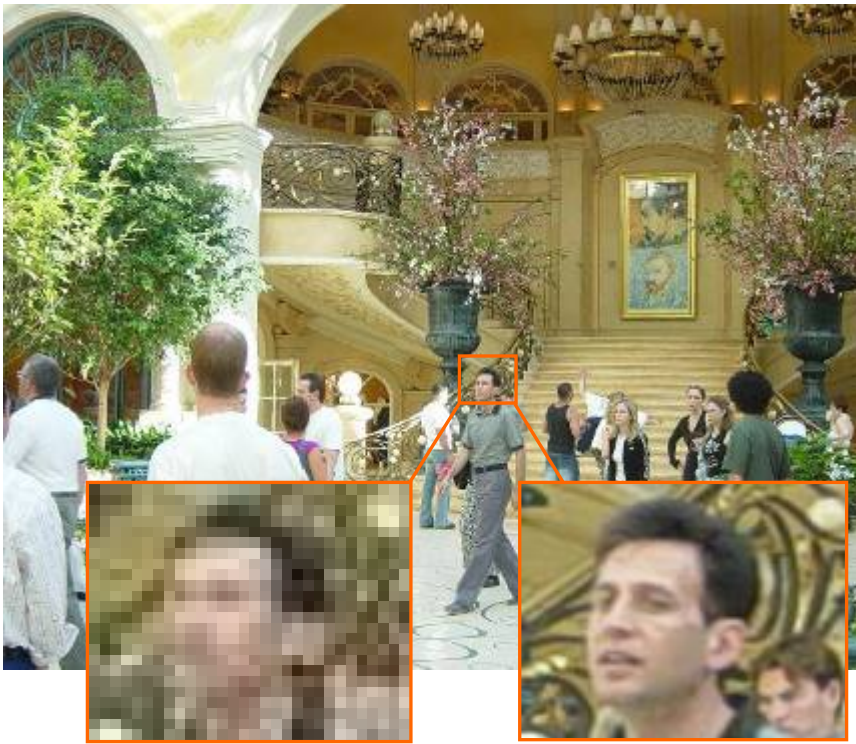


CA: 877-407-9555
NY: 800-422-6707
www.computarganz.com

computar
GANZ 

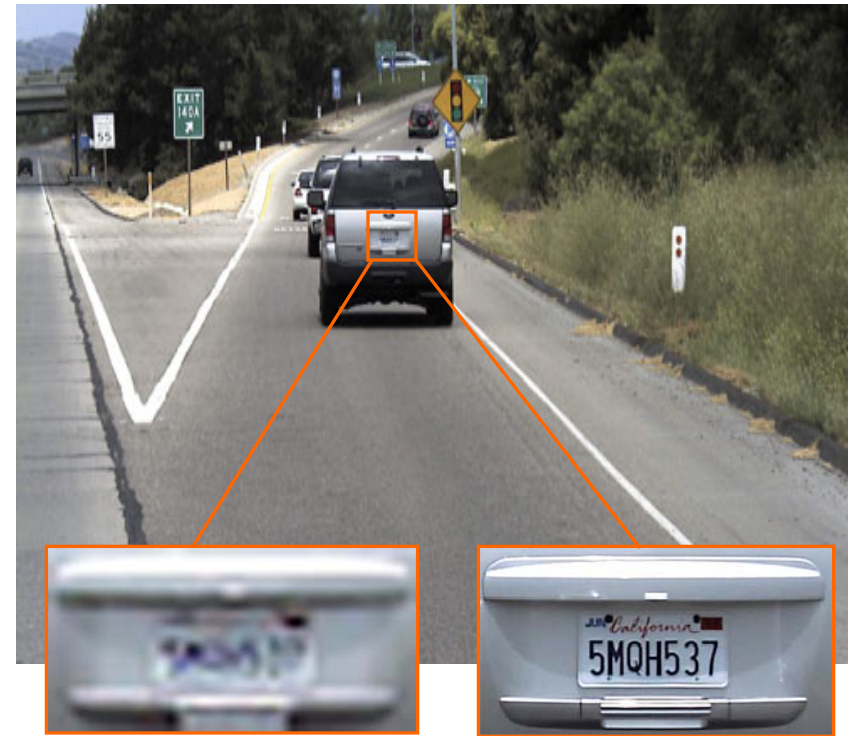
Analog vs. Megapixel

Despite significant advances in consumer imaging, a majority of video surveillance applications still utilize low-resolution cameras established on the analog standard.



720x480
NTSC CCTV System

1.3 Megapixel Video
System



720x480
NTSC CCTV System

2 Megapixel Video
System



CA: 877-407-9555
NY: 800-422-6707
www.computarganz.com



Resolution 101

| <u>Resolution</u> | <u>Pixels</u> | <u>Camera / Server / Model</u> |
|-------------------|---------------|--------------------------------|
| 352x240 (CIF) | 0.1MP | Min. DVR Resolution |
| 640x480 (VGA) | 0.3MP | IPX, ZN, & ZV Series |
| 704x480 (4CIF) | 0.3MP | Max. DVR Resolution |
| 704x576 | 0.4MP | HDTV - 576p |
| 1280x720 | 0.9MP | HDTV - 720p |
| 1280x1024 (SXGA) | 1.3MP | MP1DN |
| 1600x1200 (4SVGA) | 2.0MP | MP2DN |
| 1920x1080 | 2.1MP | HDTV - 1080p |
| 2048x1536 (4XGA) | 3.0MP | MP3DN |
| 2560x1920 (16VGA) | 5.0MP | MP5DN |



CA: 877-407-9555
NY: 800-422-6707
www.computarganz.com

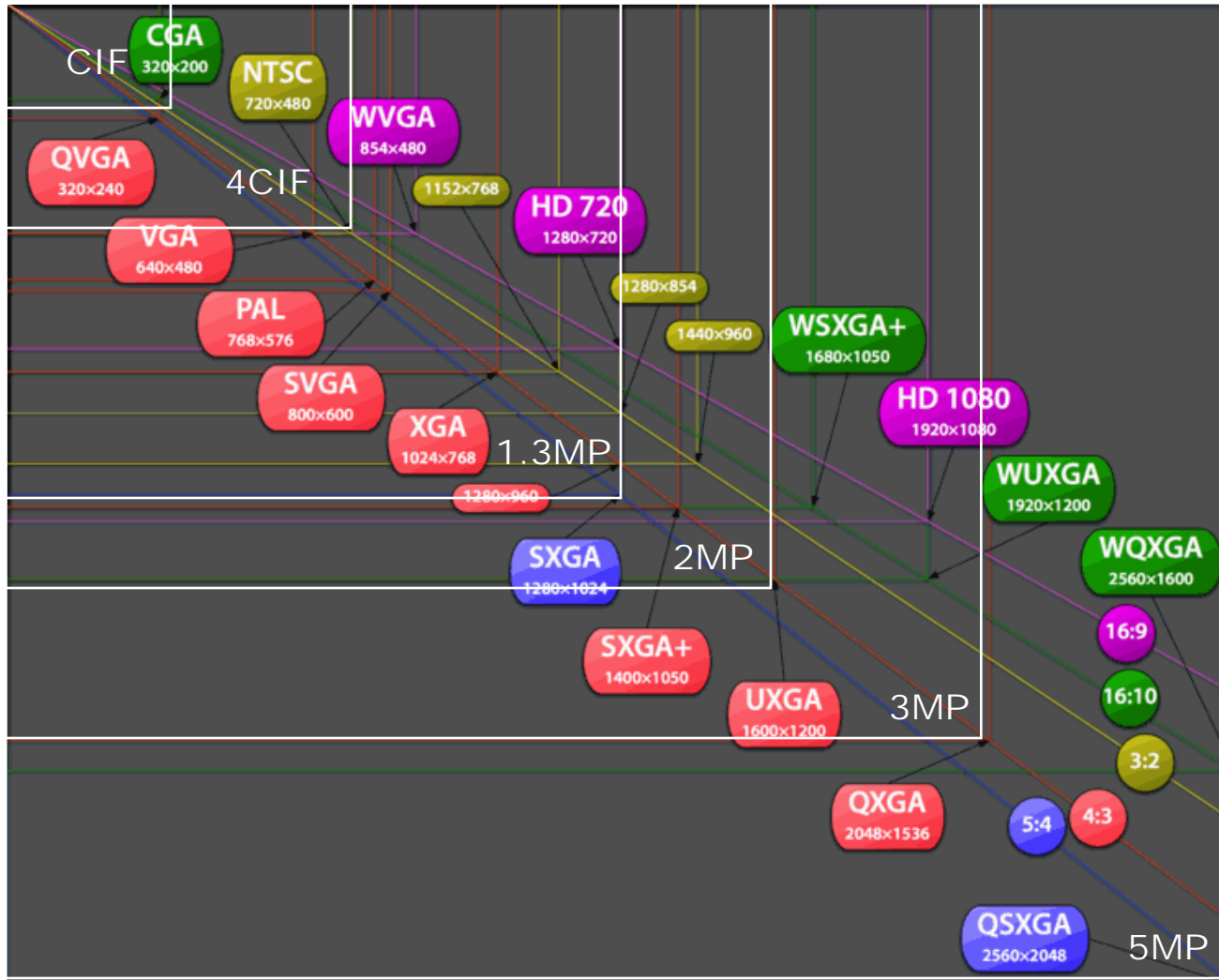


Putting Resolution In Perspective

| <u>Resolution</u> | <u>Pixels</u> | <u>Camera / Series</u> |
|--------------------------|---------------|------------------------|
| 352x240 (CIF) | 0.1MP | Min. DVR Resolution |
| 640x480 (VGA) | 0.3MP | VGA |
| 704x480 (4CIF) | 0.3MP | Max. DVR Resolution |
| 720x480 (True D1) | 0.3MP | DDK Series |
| 704x576 (576p) | 0.4MP | PixelPro VGA |
| 1280x720 (720p) | 0.9MP | PixelPro 720p |
| 1280x1024 (SXGA) | 1.3MP | MP1DN / MP1A |
| 1600x1200 (UXGA) | 2.0MP | MP2DN / MP2A |
| 1920x1080 (1080p) | 2.1MP | PixelPro 1080p |
| 2048x1536 (QXGA) | 3.0MP | MP3DN |
| 2560x1920 (16VGA) | 5.0MP | MP5DN / MP5A |



Resolution 101



CA: 877-407-9555
NY: 800-422-6707
www.computarganz.com



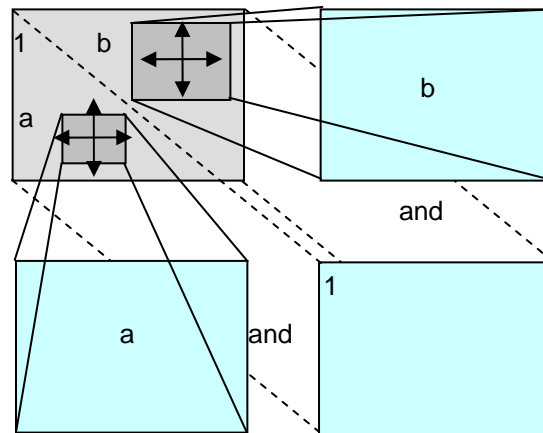
Differences Between Mechanical & Digital PTZ



640x480
(NTSC/PAL)



Existing Mechanical PTZ allow either Full FOV Image **OR** Zoomed Image, but not both.



Megapixel cameras can simultaneously display Full FOV **&** Digitally Zoomed Image!



CA: 877-407-9555
NY: 800-422-6707
www.computarganz.com

computar
GANZ

Megapixel Lenses

Full Range of Computar® Monofocal & Varifocal Lenses



H0514-MP



M0814-MP



M1214-MP



M1614-MP



M2514-MP



M3514-MP



M5018-MP



M7528-MP



MLM3X-MP



M3Z1228C-MP



H2Z0414C-MP



HG2Z0414FC-MP



TG4Z2813FCS-MPIR



H3Z4518CS-MPIR



CA: 877-407-9555
NY: 800-422-6707
www.computarganz.com

computar
GANZ

Computar Megapixel & HD Lens Offering



H0514-MP
(5mm)
2MP



M0814-MP
(8mm)
2MP



M1214-MP
(12mm)
2MP



M1614-MP
(16mm)
2MP



M2514-MP
(25mm)
2MP



M3514-MP
(35mm)
2MP



M5018-MP
(50mm)
2MP



M7528-MP
(75mm)
2MP



TG4Z2813FCS-MPIR
(2.8-12mm A/I)
1 MP
720p HD



H2Z0414C-MP
(4-8mm)
2MP



HG2Z0414FC-MP
(4-8mm A/I)
2MP



H3Z4518CS-MPIR
(4.5-13.2mm)
3 MP



T3Z0312CS-MPIR
(3-8mm)
3 MP
1080p HD



TG3Z0312FCS-MPIR
(3-8mm A/I)
3 MP
1080p HD



CA: 877-407-9555
NY: 800-422-6707
www.computarganz.com



Megapixel Lenses

Full Range of Computar® Monofocal & Varifocal Lenses

| Model # | Type | Aperture | Focal Length | Mount | Iris | Specialty |
|------------------|------|----------|----------------|-------|---------|----------------|
| TG4Z2813FSC-MPIR | 1/3" | F1.3 | 2.8-12mm | CS | DC Auto | D/N, IR, 1.3MP |
| T3Z0312CS-MPIR | 1/3" | F1.8 | 3-8mm | CS | Manual | D/N, IR, 3MP |
| TG3Z0312FCS-MPIR | 1/3" | F1.8 | 3-8mm | CS | DC Auto | D/N, IR, 3MP |
| H3Z4518CS-MPIR | 1/2" | f1.8 | 4.5mm ~ 13.2mm | CS | Manual | D/N, IR, 3MP |
| H2Z0414C-MP | 1/2" | f1.4 | 4mm ~ 8mm | C | Manual | n/a |
| HG2Z0414FC-MP | 1/2" | f1.4 | 4mm ~ 8mm | C | DC Auto | n/a |
| TG4Z2813FCS-MPIR | 1/3" | f1.3 | 2.8mm ~ 12mm | CS | DC Auto | D/N, IR, 1.3MP |
| H0514-MP | 1/2" | f1.4 | 5mm | C | Manual | n/a |
| M0814-MP | 2/3" | f1.4 | 8mm | C | Manual | n/a |
| MP1214-MP | 2/3" | f1.4 | 12mm | C | Manual | n/a |
| M1614-MP | 2/3" | f1.4 | 16mm | C | Manual | n/a |
| M1620-MPV | 2/3" | F2.0 | 16mm | C | Manual | 3MP |
| M2514-MP | 2/3" | f1.4 | 25mm | C | Manual | n/a |
| M2518-MPV | 2/3" | F1.8 | 25mm | C | Manual | 3MP |
| M2518-MPW | 2/3" | F1.8 | 25mm | C | Manual | 5MP |
| M3514-MP | 2/3" | f1.4 | 35mm | C | Manual | n/a |
| M3520-MPV | 2/3" | F2.0 | 35mm | C | Manual | 3MP |
| M5018-MP | 2/3" | f1.8 | 50mm | C | Manual | n/a |
| M5028-MPV | 2/3" | F2.8 | 50mm | C | Manual | 3MP |
| M7528-MP | 2/3" | f2.8 | 75mm | C | Manual | n/a |
| M3Z1228C-MP | 2/3" | f2.8 | 12mm ~ 36mm | C | Manual | n/a |



CA: 877-407-9555
 NY: 800-422-6707
www.computarganz.com



Megapixel Lenses

Computar® Introduces New 3MP Varifocal D/N IR Lens



H3Z4518CS-MPIR

- True 3-Megapixel Center and Corner Resolution
- 3X Varifocal 4.5 ~ 13.2mm / F1.8
- 1/2" Format, CS Mount
- IR-Corrected for True Day/Night Cameras
Standard IP Cameras
- Locking Set Screws on Zoom, Focus and Iris rings
- Precision All-Glass Optics Ensure Minimal Distortion
- Comprehensive 3-Year Warranty



CA: 877-407-9555
NY: 800-422-6707
www.computarganz.com

computar
GANZ

Computar Megapixel & HD Lens Offering

3MP 1/3" Format Varifocal D/N IR Lens



TG3Z0312FCS-MPIR

- Great Match for **PixelPro** 1/2.5" CMOS Sensor
- True 3-Megapixel Center and Corner Resolution
- 3X Varifocal 3 ~ 8mm / F1.2
- Manual & DC Auto Iris versions available
- 10% Larger Image - Designed for HD 16:9 Format
- IR-Corrected for True Day/Night Cameras
- No Focus Shift when using IR Illumination
- Locking Set Screws on Zoom, Focus and Iris rings
- Precision All-Glass Optics Ensure Minimal Distortion
- Comprehensive 3-Year Warranty



CA: 877-407-9555
NY: 800-422-6707
www.computarganz.com

computar
GANZ

PixelPro Series

(H.264 & MJPEG)

VGA



**CS-Mount
ZN-C1**

720p



**CS-Mount
ZN-C1M**

1080p



**CS-Mount
ZN-C2M**



**Vandal-Proof Dome
ZN-DT1A**



**Vandal-Proof Dome
ZN-DT1MA**



**Vandal-Proof Dome
ZN-DT2MA**



CA: 877-407-9555
NY: 800-422-6707
www.computarganz.com

computar
GANZ

PixelPro



Features & Specifications



- 1/2.5" Progressive Scan CMOS
- 30 ips @ 1080p Full HD Resolution
- 16:9 Aspect Ratio with 'Wide Mode'
- True Mechanical Day/Night
- DC Auto Iris Output
- H.264 & M-JPEG Dual-Streaming



CA: 877-407-9555
NY: 800-422-6707
www.computarganz.com

computar
GANZ

PixelPro



1/2.5" CMOS Sensor – FOV Calculations



Resolution / Mode

3mm

8mm

1080p Normal

79.3°

31.0°

720p Wide Mode

105.0°

41.3°

720p Normal

79.3°

31.0°

VGA

87.6°

34.1°



CA: 877-407-9555
NY: 800-422-6707
www.computarganz.com

computer
GANZ

PixelPro



Features & Specifications



- Analog BNC Service Monitor Jack
- On-board Micro SDHC Card Slot
- External Alarm I/O Interface
- Pre- & Post-Alarm Buffers
- Bi-directional Audio Support
- Triple Power (12VDC / 24VAC / PoE)



CA: 877-407-9555
NY: 800-422-6707
www.computarganz.com

computar
GANZ

PixelPro



Features & Specifications

- ONVIF Membership & Compliance
- NVR Software Integration Partners
- HTML-based SDK / API (CGI)
- P-Iris (Stepping Motorized Iris)
- MFZ (Motorized Focus & Zoom)
- Comprehensive 3-Year Warranty



CA: 877-407-9555
NY: 800-422-6707
www.computarganz.com

computar
GANZ

PixelPro



ONVIF Membership & Compliance



- Global open interface standard designed to ensure compatibility & interoperability between all network video devices.



- CBC Group is an official ONVIF member.
- PixelPro is certified as ONVIF Compliant.



CA: 877-407-9555
NY: 800-422-6707
www.computarganz.com



PixelPro



NVR Software Integration Partners

GANZ
ZNS SERIES

- **ZNS-NVR** is a basic monitoring & recording software which is licensed per 4, 9, 16, or an unlimited number of channels.

 **OnSSI**
IP To The Core

- **ONSSI Ocularis** provides sophisticated user interface tools for accessing and reviewing IP-based surveillance video.

exacq
Technologies

- **ExacqVision VMS** (Video Management System) is an NVR software solution which offers several high-end features.



- **Milestone** provides an open-platform NVR solution, with optional software modules geared towards video analytics.

GANZ
VSoIP
VIDEO SURVEILLANCE
OVER INTERNET PROTOCOL

- **VSoIP** is a monitoring and recording software suite which will work with all GANZ IP & Megapixel devices, along with support for DIGIMASTER Networking DVRs.



CA: 877-407-9555
NY: 800-422-6707
www.computarganz.com

computar
GANZ

Web Browser Setup

SETUP CAMERA - Windows Internet Explorer
http://192.168.0.2/html/install.htm

File Edit View Favorites Tools Help

SETUP CAMERA

GANZ

Live Setup WEB Remote Viewer

Install

- Video
- Audio
- Live
- SD Card
- FTP
- Event
- Network
- System

Installation Setup

Installation Mode OFF

Analog Video Format NTSC

Go to :
[Setup Video Codec](#)

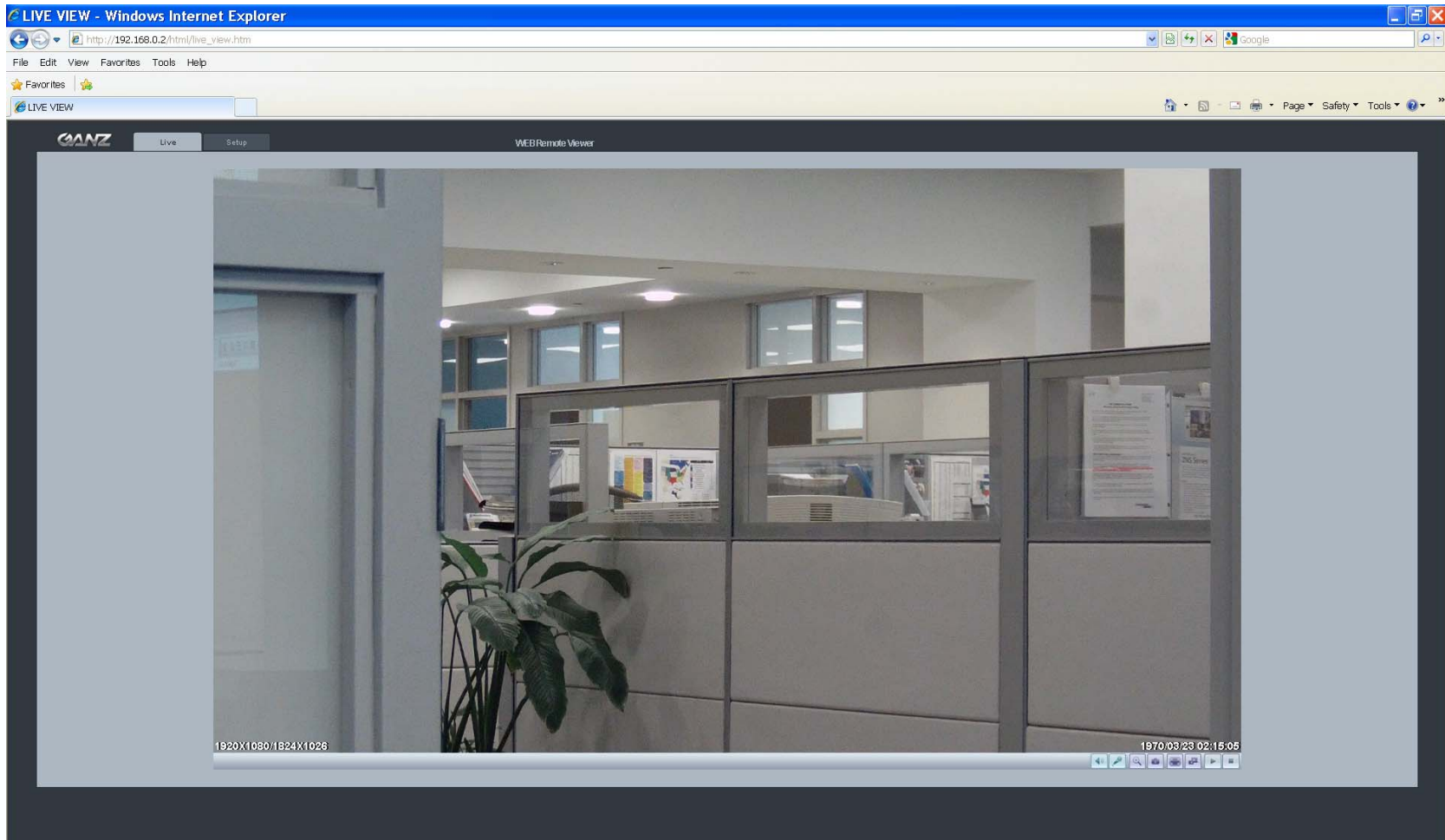
‘Installation Mode’ enables the Analog BNC Service Monitor Jack.



CA: 877-407-9555
NY: 800-422-6707
www.computarganz.com

computar
GANZ

Web Browser View



1080p (16:9) Standard Live View Mode within Internet Explorer.



CA: 877-407-9555
NY: 800-422-6707
www.computarganz.com



Web Browser View



Picture-in-Picture (PIP) Display of Full Screen & Zoomed View.



CA: 877-407-9555
NY: 800-422-6707
www.computarganz.com



Web Browser Setup

GANZ Live Setup WEB Remote Viewer

- Install
- Video
 - Codec
 - ▶ **Camera**
- Audio
- Live
- SD Card
- FTP
- Event
- Network
- System

Exposure Control

Exposure Mode:

AGC Gain: dB [0 ~ 36]

e-Shutter Speed: 1/(Value) [4 ~ 2000]

Slow Shutter:

MAX AGC:

DC-Iris Control:

BLC Control:

Day & Night Mode:

White Balance Control

WB Mode:

MWB Mode:

Image Property Control

Sharpness: [1 ~ 15, Def:8]

Brightness: [0 ~ 30, Def:15]

Contrast: [0 ~ 30, Def:15]

Color: [0 ~ 30, Def:15]

Hue: [0 ~ 30, Def:15]

SAVE RESET

View live video while making adjustments to all video settings.



CA: 877-407-9555
NY: 800-422-6707
www.computarganz.com



Web Browser View & Setup

GANZ Live Setup WEB Remote Viewer

Video Codec

| Stream | 1st | 2nd |
|-------------------|--------------------------|---------|
| Codec | H.264 | H.264 |
| Size | 704x576 | 704x576 |
| Frame Rate (FPS) | 15.0 | 15.0 |
| Bit-rate Control | CBR | CBR |
| Average Bit-rate | 1000 | 1000 |
| Unit | kbps [512kbps~8000kbps] | |
| Anti-Flicker Mode | 704x576 | |
| Bandwidth Limit | OFF | |
| MAX Bandwidth | 5000 | |
| Unit | kbps [1000kbps ~ 50Mbps] | |

Go to : [Setup Installation](#)

SAVE RESET

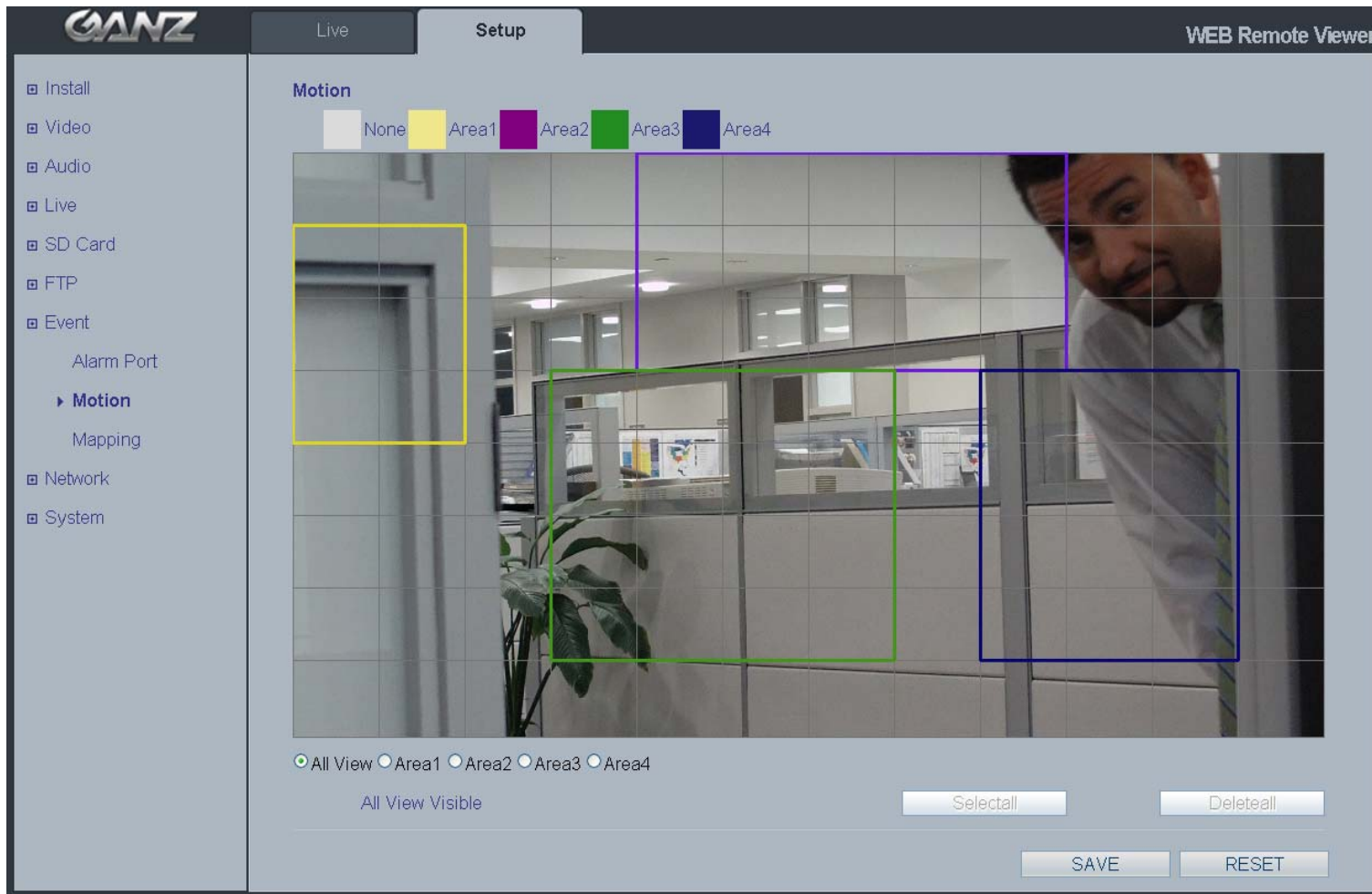
Dual-Streaming H.264 & Motion JPEG, with adjustable aspect ratio.



CA: 877-407-9555
NY: 800-422-6707
www.computarganz.com



Web Browser View & Setup



Internal Motion Detection allows you to establish multiple detection zones.



CA: 877-407-9555
NY: 800-422-6707
www.computarganz.com



Web Browser View & Setup

The screenshot displays the GANZ WEB Remote Viewer interface. The top navigation bar includes 'Live' and 'Setup' tabs, with 'Setup' being the active tab. The main content area is titled 'User Management' and features a table with the following columns: User ID, Password, Group, E-Mail, Notification, and Del/Add. The table contains two entries: 'ADMIN' with a password of four dots and the 'Admin' group, and 'Hank Frank' with a password of seven dots and the 'User' group. Below the table, there are 'SAVE' and 'RESET' buttons. A 'Go to:' section includes a link for 'Setup E-mail'. The left sidebar contains a menu with options like 'Install', 'Video', 'Audio', 'Live', 'SD Card', 'FTP', 'Event', 'Network', 'System', and 'User' (which is expanded to show 'Date & Time', 'Maintenance', and 'Information').

| User ID | Password | Group | E-Mail | Notification | Del/Add |
|------------|----------|-------|--------|--------------------------|---------|
| ADMIN | •••• | Admin | | <input type="checkbox"/> | |
| Hank Frank | ••••••• | User | | <input type="checkbox"/> | Add |

User Management - establish an unlimited number of user accounts.



CA: 877-407-9555
NY: 800-422-6707
www.computarganz.com



Megapixel DN Cameras

(H.264 / MJPEG)



MP1DN



MP2DN



MP3DN



MP5DN



CA: 877-407-9555
NY: 800-422-6707
www.computarganz.com



Megapixel Cameras

(MJPEG)



MP1A



MP2A



MP3A



MP5A



MP3DN-2



MP8D-L4



MP8P



CA: 877-407-9555
NY: 800-422-6707
www.computarganz.com



Standard IP Cameras: IPX Series



DDK-1500D



DDK-1500

| Model # | Resolution | Lux | Frame Rate | Power | Lens Type |
|-----------|--------------|-----------------------------------|--------------|--------------|------------------|
| DDK-1500 | 520 TV lines | Day 0.5 / Night 0.03 | Up to 30 fps | PoE or 12VDC | 1/3" C/CS, DC AI |
| DDK-1500D | 530 TV lines | Day 0.5 / Night 0.00 (w/IR) | Up to 30 fps | PoE or 12VDC | 3.7-12mm AI DC |



CA: 877-407-9555
 NY: 800-422-6707
www.computarganz.com



Economy IP Cameras: ZN Series



ZN-PT304L



ZN-YH305



ZN-D2024



ZN-BT3312

| <u>Model #</u> | <u>Resolution</u> | <u>Lux</u> | <u>Frame Rate</u> | <u>Power</u> | <u>Lens Type</u> |
|----------------|-------------------|---------------|-------------------|---------------|--------------------|
| ZN-PT304L | 640x480 | 1.5 | 30 fps | 12 VDC | 4mm |
| ZN-YH305 | 640x480 | 0.6 | 30 fps | PoE or 12 VDC | C/CS |
| ZN-D2024 | 640x480 | 1.5 | 30 fps | PoE or 12 VDC | 2-4mm VF |
| ZN-BT3312 | 640x480 WDR | 0.68 / 0 w/IR | 30 fps | PoE or 12 VDC | 3.3-12mm IR VF A/I |



CA: 877-407-9555
 NY: 800-422-6707
www.computarganz.com



Single Channel Video Server: ZV Series



ZV-S306

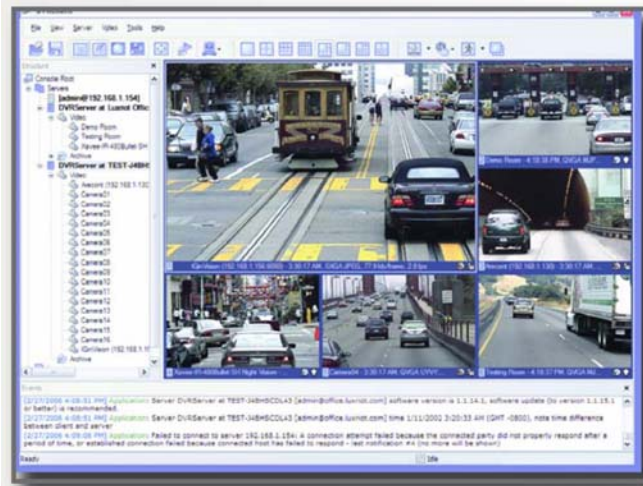
| <u>Model #</u> | <u>Resolution</u> | <u>PTZ</u> | <u>Frame Rate</u> | <u>Power</u> | <u>Networking</u> |
|----------------|-------------------|-----------------|-------------------|--------------|--------------------------------|
| ZV-S306 | 640x480 | RS485 / Pelco D | 30 fps | 12 VDC | 10/100 Mbps Ethernet, RJ-45 |



CA: 877-407-9555
NY: 800-422-6707
www.computarganz.com



ZNS Series NVR Software



Compatible with all GANZ IP Cameras (including Megapixel) and Video Servers.

Intuitive user interface requires minimal training in order to operate.

Network Camera Search Wizard finds all available IP Cameras on the network.

| NVR Software License | <i>Shareware</i> | <i>Basic</i> | <i>Professional</i> | <i>Advanced</i> | <i>Enterprise</i> |
|--|------------------|--------------|---------------------|-----------------|-------------------|
| Maximum No. of Cameras | 1 | 4 | 9 | 16 | Unlimited* |
| Maximum Simultaneous Remote Client Connections | 1 | 1 | 3 | 5 | Unlimited* |

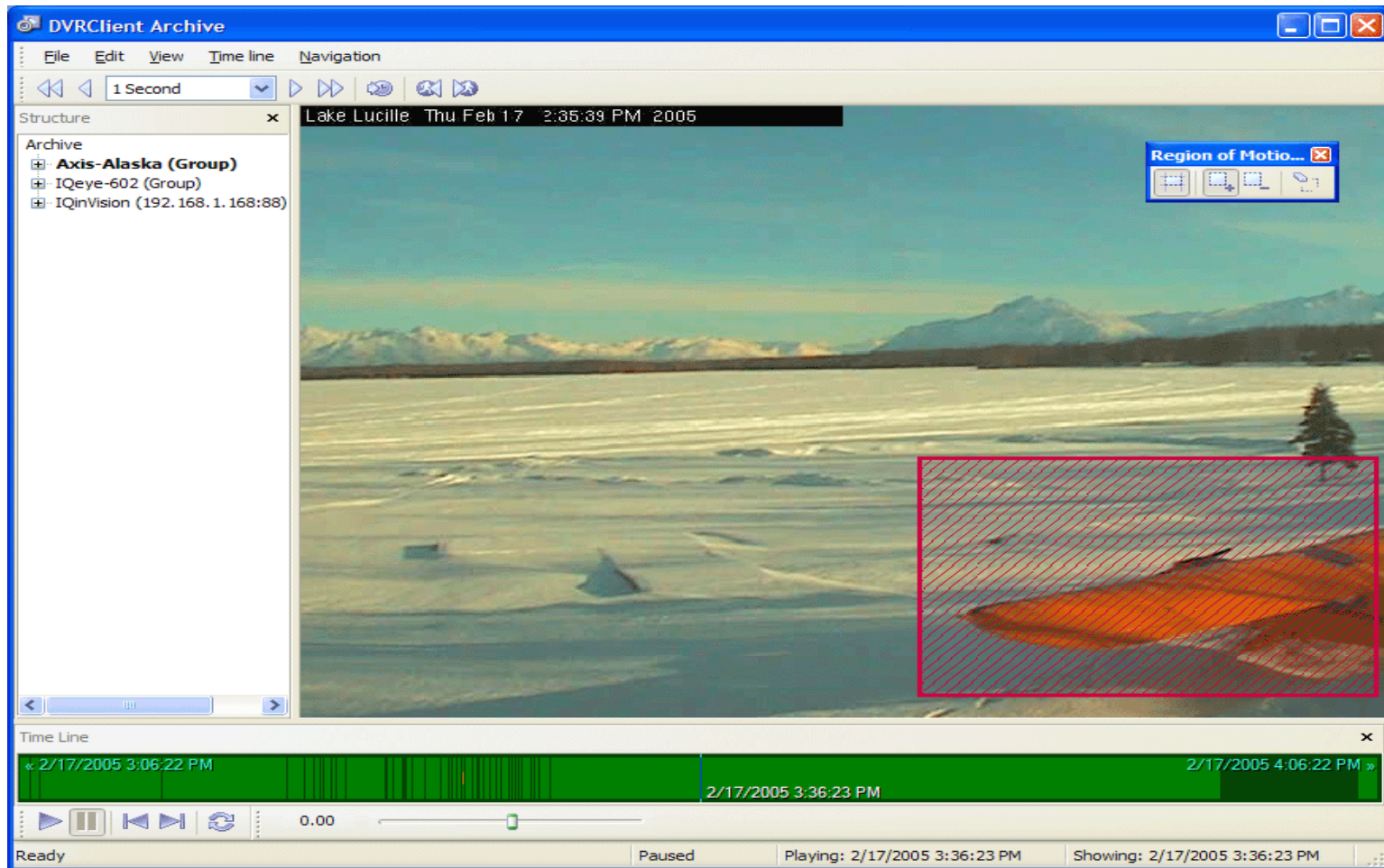
** Per NVR Server; limitations are based on hardware specifications & network performance.*



CA: 877-407-9555
 NY: 800-422-6707
www.computarganz.com



ZNS Software



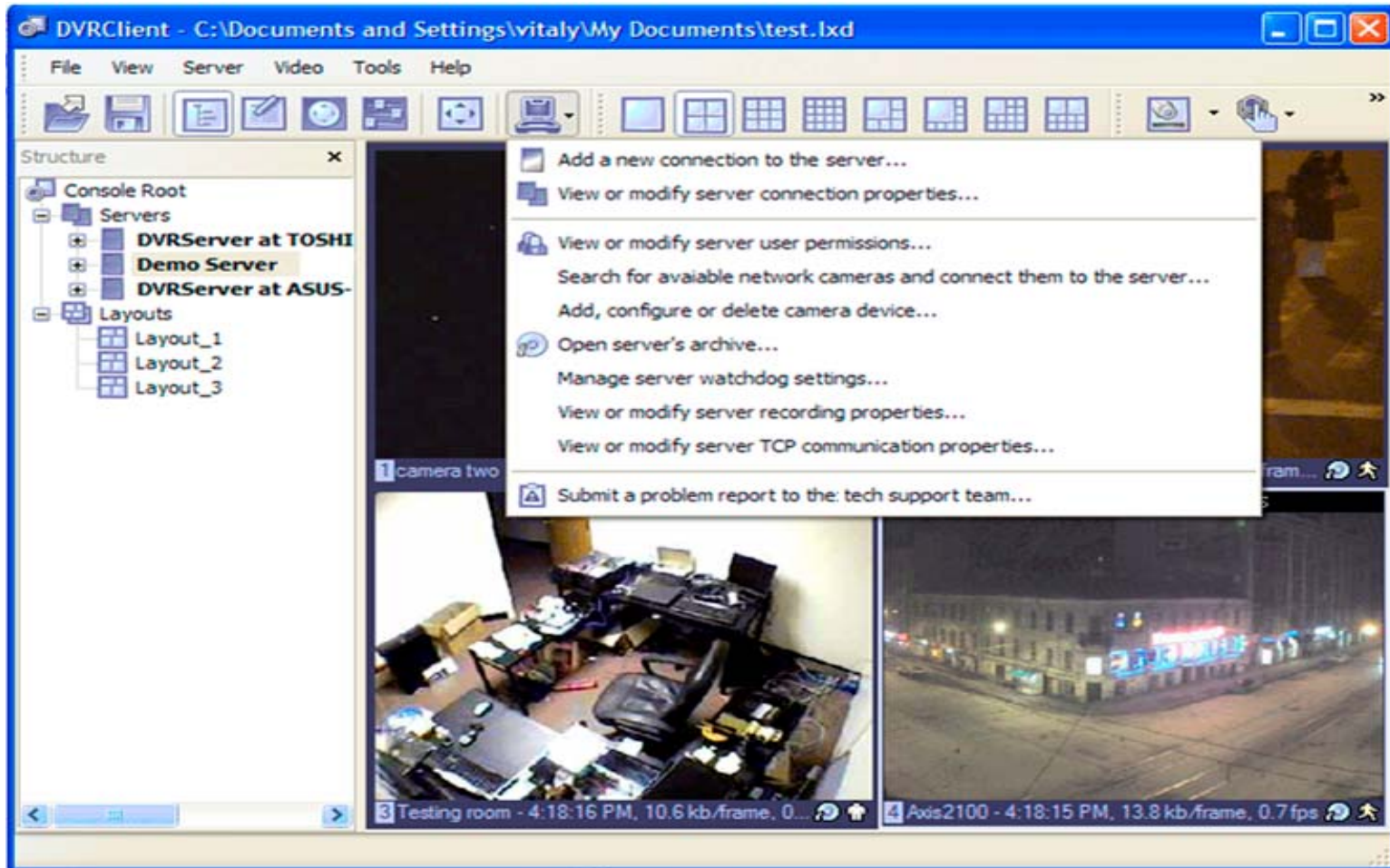
Besides allowing standard navigation in searching through recorded video playback, the ZNS Software also has the ability to search for motion activity in any specified regions.



CA: 877-407-9555
NY: 800-422-6707
www.computarganz.com

computar
GANZ

ZNS Software



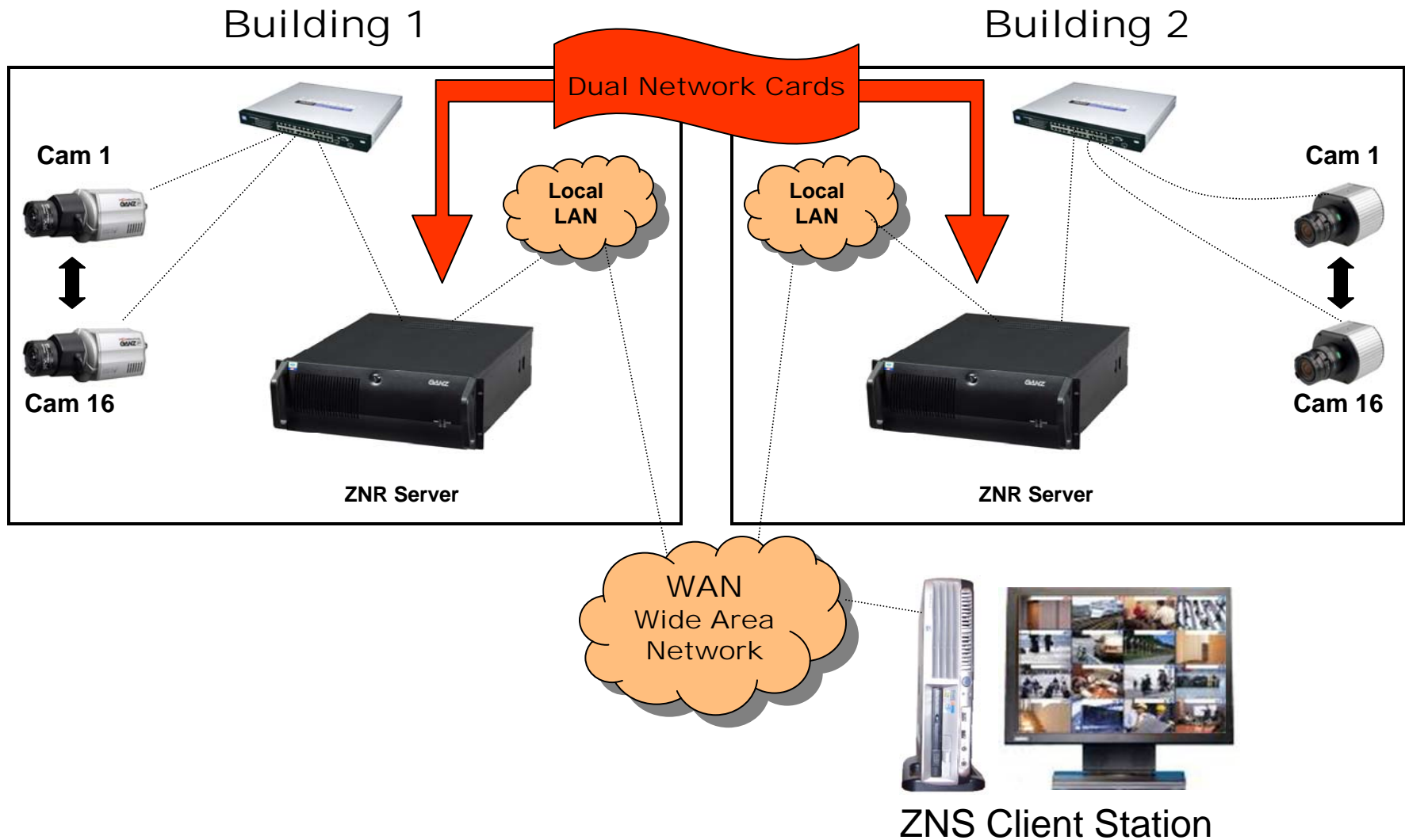
Configuring the ZNS Software is a simple and intuitive process since it's done via user-friendly wizards.



CA: 877-407-9555
NY: 800-422-6707
www.computarganz.com



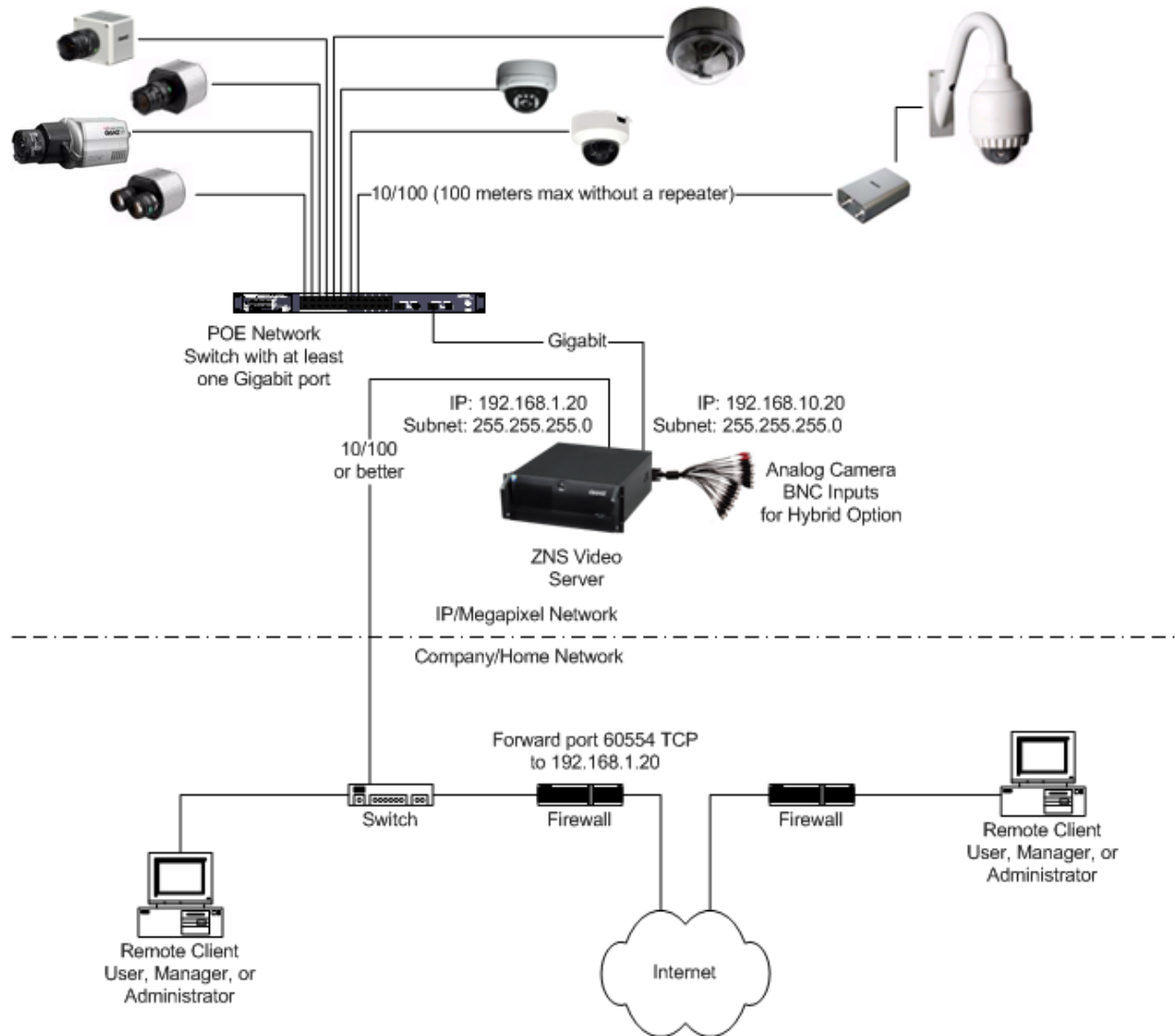
IP / Megapixel Network Topology



CA: 877-407-9555
NY: 800-422-6707
www.computarganz.com

computar
GANZ

Network Topology: Network Design: Parallel Layout



CA: 877-407-9555
NY: 800-422-6707
www.computarganz.com



License Plate Recognition



MP5A - 50mm & MP2A - 50mm at 275 feet



CA: 877-407-9555
NY: 800-422-6707
www.computarganz.com

computar
GANZ

MPx Lens Selection for Recognition

Megapixel Lenses

| Model # | Type | Aperture | Focal-Length | ~Horiz.Angle | Mount | Iris Type | Specialty |
|------------------|------|----------|--------------|--------------|-------|-----------|----------------|
| TG4Z2813FCS-MPIR | 1/3" | f1.3 | 2.8~12mm | 81°-20° | CS | DC_Auto | D/N, IR, 1.3MP |
| T3Z0312CS-MPIR | 1/3" | f1.8 | 3~8mm | 77°-30° | CS | Manual | D/N, IR, 3MP |
| TG3Z0312FCS-MPIR | 1/3" | f1.8 | 3~8mm | 77°-30° | CS | DC_Auto | D/N, IR, 3MP |
| HG2Z0414FC-MP | 1/2" | f1.4 | 4~8mm | 76°-42° | C | DC_Auto | n/a |
| H2Z0414C-MP | 1/2" | f1.4 | 4~8mm | 76°-42° | C | Manual | n/a |
| H3Z4518CS-MPIR | 1/2" | f1.8 | 4.5~13.2mm | 70°-29° | CS | Manual | D/N, IR, 3MP |
| H0514-MP | 1/2" | f1.4 | 5mm | 64° | C | Manual | n/a |
| M0814-MP | 2/3" | f1.4 | 8mm | 58° | C | Manual | n/a |
| M3Z1228C-MP | 2/3" | f2.8 | 12~36mm | 40°-14° | C | Manual | n/a |
| MP1214-MP | 2/3" | f1.4 | 12mm | 40° | C | Manual | n/a |
| M1614-MP | 2/3" | f1.4 | 16mm | 30° | C | Manual | n/a |
| M2514-MP | 2/3" | f1.4 | 25mm | 20° | C | Manual | n/a |
| M3514-MP | 2/3" | f1.4 | 35mm | 14° | C | Manual | n/a |
| M5018-MP | 2/3" | f1.8 | 50mm | 10° | C | Manual | n/a |
| M7528-MP | 2/3" | f2.8 | 75mm | 6.5° | C | Manual | n/a |

| | Estimated Feet from camera for visual facial recognition (40 pixels/ft) | | | | | | | | | | | | | | | | |
|-----|---|-----|-----|------|--------------------|-------|-----|-----|--------|--------------------|------|------|------|------|------|------|------|
| | 1/3" Format lenses | | | | 1/2" format lenses | | | | | 2/3" format lenses | | | | | | | |
| | 2.8mm | 3mm | 8mm | 12mm | 4mm | 4.5mm | 5mm | 8mm | 13.2mm | 8mm | 12mm | 16mm | 25mm | 35mm | 36mm | 50mm | 75mm |
| MP1 | 19 | 20 | 53 | 80 | 20 | 23 | 25 | 40 | 66 | 29 | 44 | 58 | 91 | 127 | 131 | 182 | 273 |
| MP2 | 23 | 25 | 67 | 100 | 25 | 28 | 31 | 50 | 83 | 36 | 55 | 73 | 114 | 159 | 164 | 227 | 341 |
| MP3 | 30 | 32 | 85 | 128 | 32 | 36 | 40 | 64 | 106 | 46 | 70 | 93 | 146 | 204 | 210 | 291 | 436 |
| MP5 | 38 | 41 | 108 | 162 | 41 | 46 | 51 | 81 | 134 | 59 | 88 | 118 | 184 | 258 | 265 | 368 | 552 |

| | Estimated Feet from camera for visual or software license plate recognition (60 pixels/ft) | | | | | | | | | | | | | | | | |
|-----|--|-----|-----|------|--------------------|-------|-----|-----|--------|--------------------|------|------|------|------|------|------|------|
| | 1/3" Format lenses | | | | 1/2" format lenses | | | | | 2/3" format lenses | | | | | | | |
| | 2.8mm | 3mm | 8mm | 12mm | 4mm | 4.5mm | 5mm | 8mm | 13.2mm | 8mm | 12mm | 16mm | 25mm | 35mm | 36mm | 50mm | 75mm |
| MP1 | 12 | 13 | 36 | 53 | 13 | 15 | 17 | 27 | 44 | 20 | 29 | 39 | 61 | 85 | 87 | 121 | 182 |
| MP2 | 16 | 17 | 44 | 67 | 17 | 19 | 21 | 33 | 55 | 24 | 36 | 49 | 76 | 106 | 109 | 152 | 227 |
| MP3 | 20 | 21 | 57 | 85 | 21 | 24 | 27 | 43 | 71 | 31 | 47 | 62 | 97 | 136 | 140 | 194 | 291 |
| MP5 | 25 | 27 | 72 | 108 | 27 | 30 | 34 | 54 | 89 | 39 | 59 | 79 | 123 | 172 | 177 | 245 | 368 |

| | Estimated Feet from camera for software facial recognition (120 pixels/ft) | | | | | | | | | | | | | | | | |
|-----|--|-----|-----|------|--------------------|-------|-----|-----|--------|--------------------|------|------|------|------|------|------|------|
| | 1/3" Format lenses | | | | 1/2" format lenses | | | | | 2/3" format lenses | | | | | | | |
| | 2.8mm | 3mm | 8mm | 12mm | 4mm | 4.5mm | 5mm | 8mm | 13.2mm | 8mm | 12mm | 16mm | 25mm | 35mm | 36mm | 50mm | 75mm |
| MP1 | 6 | 7 | 18 | 27 | 7 | 8 | 8 | 13 | 22 | 10 | 15 | 19 | 30 | 42 | 44 | 61 | 91 |
| MP2 | 8 | 8 | 22 | 33 | 8 | 9 | 10 | 17 | 28 | 12 | 18 | 24 | 38 | 53 | 55 | 76 | 114 |
| MP3 | 10 | 11 | 28 | 43 | 11 | 12 | 13 | 21 | 35 | 16 | 23 | 31 | 48 | 68 | 70 | 97 | 145 |
| MP5 | 13 | 13 | 36 | 54 | 13 | 15 | 17 | 27 | 45 | 20 | 29 | 39 | 61 | 86 | 88 | 123 | 184 |



CA: 877-407-9555
 NY: 800-422-6707
www.computarganz.com



The Importance of Calculating Pixel Density

Desired Application

Cash Register Transactions
Facial Recognition Software
License Plate Capture
Visual Identification

Pixel Density

150 pixels per ft.
120 pixels per ft.
60 pixels per ft.
40 pixels per ft.



Camera Resolution



Focal Length of Lens



Distance to Object



CA: 877-407-9555
NY: 800-422-6707
www.computarganz.com



The Importance of Calculating Pixel Density

Desired Application

Cash Register Transactions
Facial Recognition Software
License Plate Capture
Visual Identification

Pixel Density

150 pixels per ft.
120 pixels per ft.
60 pixels per ft.
40 pixels per ft.

Camera / Lens

PixelPro VGA + 8mm lens
PixelPro 720p + 8mm lens
PixelPro 1080p + 8mm lens
PixelPro 1080p + 8mm lens

Distance

25 ft.
25 ft.
25 ft.
50 ft.

Pixel Density

50 pixels per ft.
100 pixels per ft.
150 pixels per ft.
75 pixels per ft.



Only As Good As Your Optics

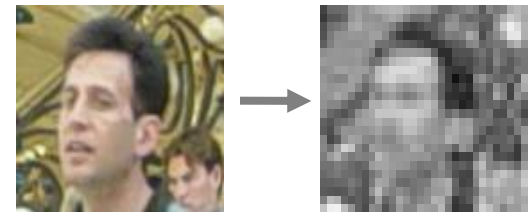
X 5MP Camera + sub-2MP lens
= *Difficult to resolve smaller objects within frame*



X 3MP Camera + 3MP center / 1.3MP corner
= *Loss of focus towards the edges of the frame*



X Day/Night MP Camera + non-IR lens
= *Focus shift in night mode with IR illumination*



X 1.3MP Camera + wide-angle lens
= *Insufficient pixel density for object recognition*



CA: 877-407-9555
NY: 800-422-6707
www.computarganz.com

computar
GANZ

Reduced Total System Cost

- **Reduced Number of Cameras per Installation**

Megapixel Cameras can replace up to 5 standard CCTV cameras including accessories such as mounts, wiring, lenses, and enclosures.

- **Reduced Wiring Cost**

Ethernet CAT5e cable is less expensive than running Coax.

- **No External Power Supply Required**

All of our IP Cameras are powered via Power-over-Ethernet (PoE) (IEEE 802.3af). Cameras would continue recording when the power is cut when a single uninterruptable power supply (UPS) is installed.

- **Easily Expandable & Scalable**

Plug any additional cameras into the network switch. All cameras can be auto-detected and installed within the NVR software.

- **Simplicity**

Simple Installation. Our technical support staff can also assist you.



CA: 877-407-9555
NY: 800-422-6707
www.computarganz.com



Thank You For Your Participation!



***IP & MEGAPIXEL
VIDEO SURVEILLANCE SOLUTIONS***

Ryo Kimura – Regional Sales Manager - rkimura@cbcamerica.com

Mark Stollenwerk – Technical Support - mstollenwerk@cbcamerica.com

Tel: 877-407-9555 / Tel: 310-793-1500



Sept 2010

CA: 877-407-9555

NY: 800-422-6707

www.computarganz.com

